

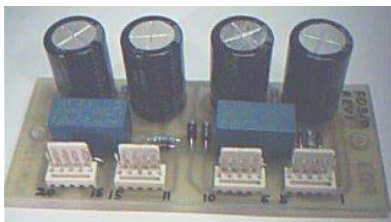
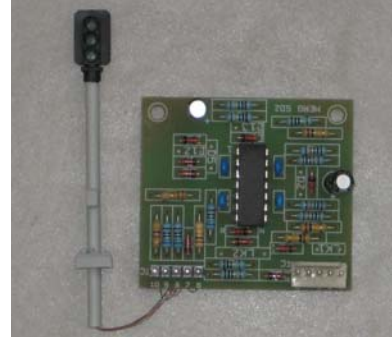


ANALOGUE DC AND ACCESSORY DRIVER KITS

Electronic Kits available to MERG members only

SD2 Colour Light Signal Controller Kit 36

A simple inexpensive circuit capable of controlling 2, 3 or 4 aspect colour light signals (signal not included) in response to block occupancy detection. Suitable for common cathode signals and signals with all LED wires available. Comes in a 4-pack



PD3 Dual Capacitor-assisted Point Motor Driver Kit 37

Available with either 1000uF or 2200uF capacitors, this kit drives up to 2 PECO/SEEP-type twin coil solenoid point motors and provides contacts for frog polarity switching. Suitable for all layouts requiring CDU-type point motor drive.

BC3 DC Block Controller Kit 38 (superBloc)

An analogue DC block train controller with interfaces for signalling and block detection. Requires one unit per layout block



BC3 Block Controller MkII Test Jig Kit 39A

The updated Test Unit for the BC3 Block Controller - picture shows the test unit with a BC3 Block Controller mounted for testing



Train-on-Track Indicator (ToTI) Kits 62 & 63

A simple train detector for detecting a train in block. Suitable for DC and DCC systems. Available as a 4 block kit as shown and as a 12 block kit

ToTI PSU Kits 64 & 65 A PSU regulator board kit and a kit of two 6 - 7.5v plug-in mains transformers to provide +5v and -5v for ToTIs.



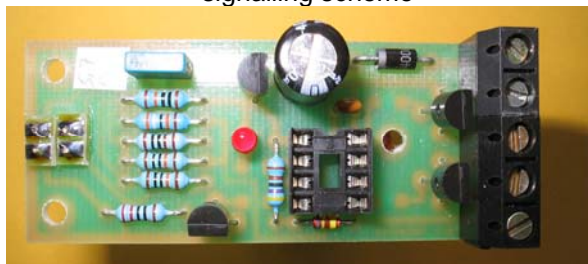
DC Volts & Amps Meters Kit 66

Two analogue meters suitable for measuring voltage and current on a DC model railway.

MODEL ELECTRONICS RAILWAY GROUP

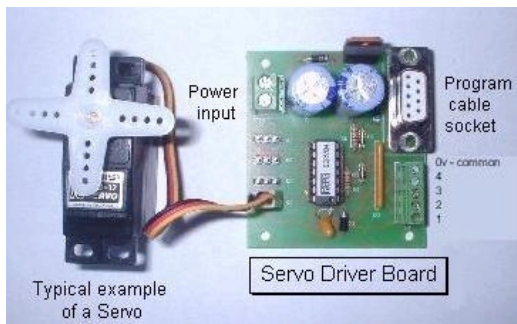
Infra-Red Train Detector (Hector) Kit 72

An infra-red train detector. Includes an IR transmitter, receiver and circuitry to drive 2-aspect signals or provide an input to a more complex signalling scheme



MkII 4ch Relay Driver Board Kit 74

A relay driver board plus BT47relays (2A contacts), allowing up to 4 relays to be driven from simple on-off signals. Invaluable for layout interlocking, reverse loops, frog polarity switching, auxiliary control and higher current switching.



4ch Servo Driver Board Kit 75

A Driver Board for controlling up to 4 standard Model Aircraft Servos. Useful for those points and signals or any other moving item on your layout. Programmable from an IBM PC or Kit 76. Servos not included.

Servo Driver Setting Box Kit 76
Setting Box for configuring the 4ch Servo driver Board



Gas Lamp Twinkler Kit 61

A simple and fun kit to simulate the flickering of a Gas Lamp. Drives up to 3 LEDs

Memory Wire Starter Pack Kit 67

A starter pack including Memory Wire for motorising points, signals, level crossings etc

Zero-1 Keyboard Kit 71

Replacement parts to refurbish the Zero-1 keyboard

Also available - FRIBURG BOOKS - Books 1 - 6 by Rutger Friburg featuring the use of electronics as applied to Model Railways and the popular DCC book by Ames, Loiseaux & Friburg

BABANI BOOKS - A selection of titles from the Babani range dealing with the use of a variety of electronic components and test equipment

COMPONENTS - BT47 Relays, Varley Relays, Track and PCB Cleaner, Reed Switches and Coils, Hall Effect Switches, a variety of Magnets, a variety of super Bright and Golden LEDs, Filament Lamps, and surplus components from Kit Production such as diodes, transistors, ICs, PICs and hardware. Technical Support available from a Yahoo Group, kit designers and much, much more besides.

SEE ALSO THE DCC KITS RANGE AND RFID KITS RANGE LEAFLETS AND RPC Kits.